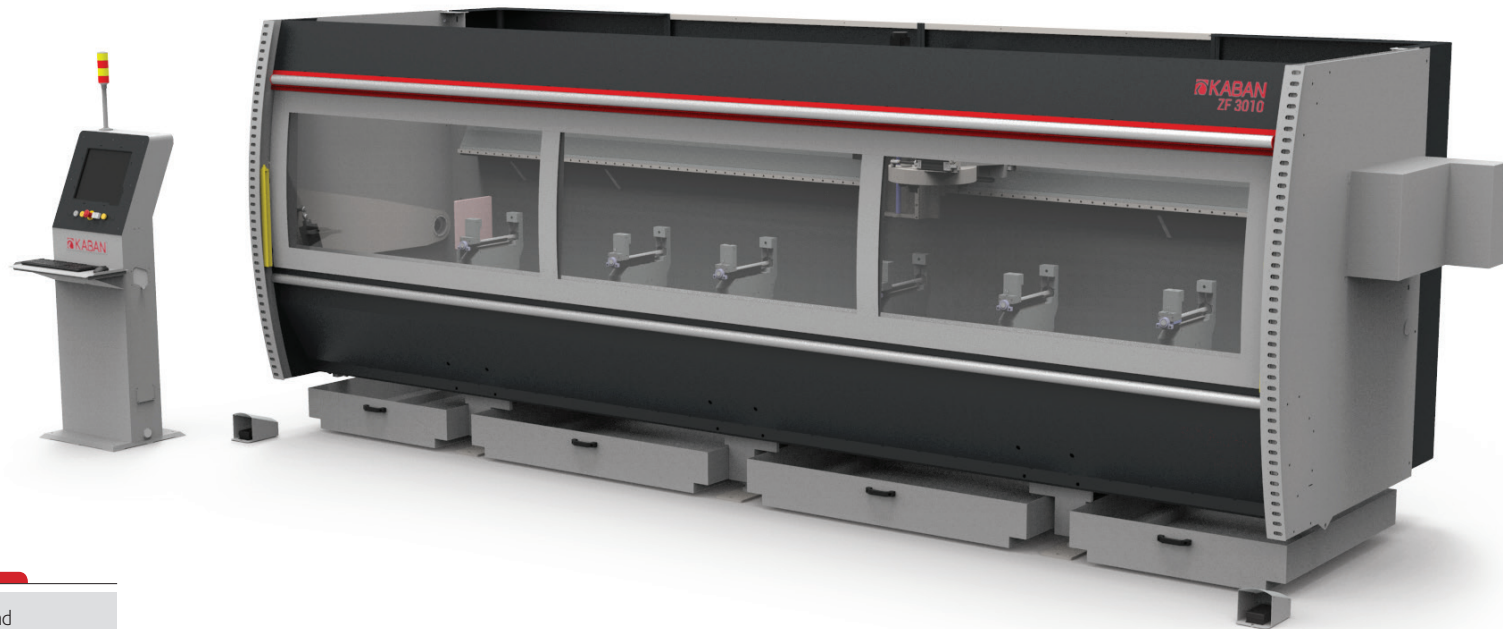


ZF 3010

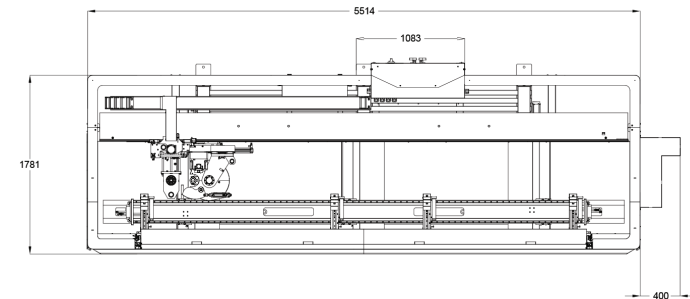
3 Axis Aluminium Machining Center

Designed to make machining operations of **aluminium, plastic, wooden materials** and **steel** profiles up to 5 mm.



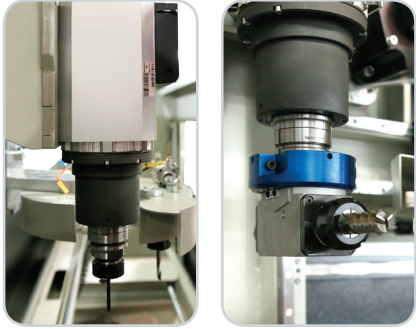
General Features

- Robust Mechanical Design for high speed and acceleration.
- It provides maximum performance as it is produced using high quality materials.
- Long-life moving parts with automatic lubrication system.
- The standard model has 4 chip buckets, 6 clamps and 8 tool holders.
- Mitsubishi PLC FX-5 control unit, internal HDD, optical communication, high speed and precision, 0.001 mm command increment and ethernet interface.
- In case of power failure, the spindle is automatically recovered from the profile by means of a program. The machine computer is protected by UPS. In this way, the remaining program can be restarted from where it left off.



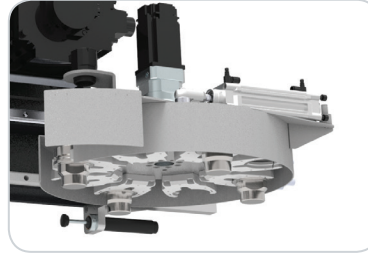
 H: 2150 mm W: 5914 mm L: 1950 mm	 400 V L1-L2-L3-N-PE 50 / 60 Hz 13.15 kW	 5300 kg	 6-8 Bar 650 l / min	 Ød: 180 mm	 L max: 4500 mm	 a max: 260 mm h max: 260 mm
--	--	-------------	----------------------------	----------------	--------------------	------------------------------------

Spindle



- HSD brand spindle which has thermostat sensor with liquid cooling 6 kW max. 24,000 rpm.
- Tool cooling system with oil-air mixture spraying, speed adjustment and liquid level sensor.
- HSK tool holder and tool holder cleaning system.
- Tool change security protocols written to reduce operator errors as much as possible.

Magazine



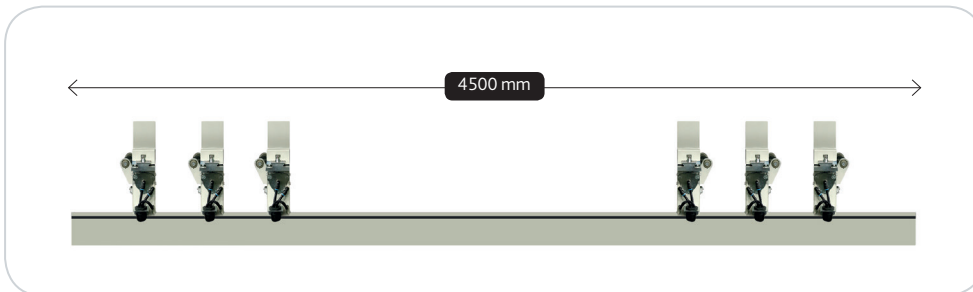
- 8 tool capacity magazine.
- Tool change feature in 8 seconds.
- Easy access from the front to change the tools from the magazine.
- It allows to save time by changing the tool when passing from one operation to another one on the piece.
- T tool can be mounted.

Control Panel



- Easy to use and flexible operating system and interface.
- Mitsubishi FX-5 control unit.
- Numerical processing with G-Code transferred from CAD-CAM software.
- It communicates with ORGADATA and programs that extract .ncx files.
- High performance machine management.
- Easy parameter settings.
- It has periodic maintenance reminder function.
- Service support with remote connection.
- Usb and Com Port input.

Clamps



- The loading of the profile is done by the approach of the clamp group to the operator during loading.
- The standard module has 6 clamps.
- Roller system of the surfaces where the profile is placed provides the comfort of profile sliding.
- According to the receipts on the workpiece, the clamps receive servo-controlled automatic position.
- Easy piece referencing with double-sided profile support system.
- Long length profile processing is available. With Ø180 mm saw blade, it makes milling from the ends of the profiles.
- Thanks to the pressure regulator, the clamp tightness can be adjusted according to the profile thickness.

Axis	
HSD ES779 Spindle Motor	1 x 6 kW
X Eksen Servo Motor	1 x 2,0 kW
Y Eksen Servo Motor	2 x 0,75 kW
Z Eksen Servo Motor (Frenli)	1 x 0,75 kW
X Eksen Rapid Speed	210m/dk
Y Eksen Rapid Speed	45 m/dk
Z Eksen Rapid Speed	45 m/dk
X Ekseni Servo Redüktörü	i:5
Magazin Servo Redüktörü	i:70
Magazine Sets	
Magazine Team Pieces	8
Magazin Motoru	
Servo Motor	1 x 0,4 kW
Machine Dimensions	
Height	2150 mm
Width	1950 mm
Length	5914 mm
Weight	5300 kg
Air	
Pressure	8 bar
Consumption	650 lt/dk
Screen	
	17"lcd
Communication	
	Ethernet
	USB
Software	
Control	FX5
CAD / CAM	CamQuix
Electricity	
Voltage	380V 50-60 Hz
Power	13,15 kW